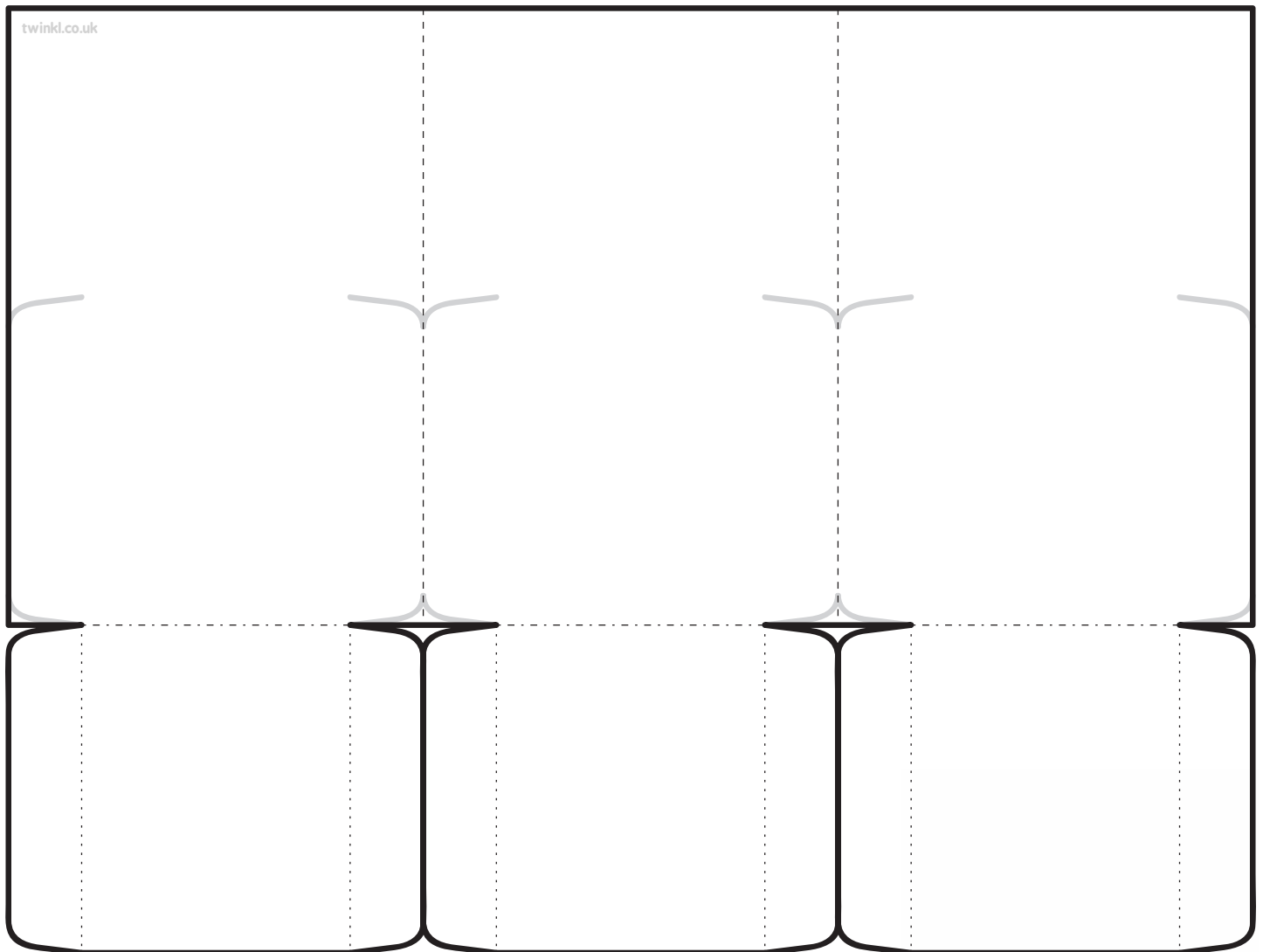

Victorian Inventions

The Victorian Era (1837 – 1901) was a very productive time for new inventions. Many household devices that we take for granted today were invented during this period.

Cut out the sorting book and score along the dotted lines. Fold the bottom flaps upwards and the side flaps inwards. Stick, tape or glue the folded up bottom flaps to create a mini book with three pockets then stick the pocket labels on the front.

Cut out the invention slips and then sort them according to whether you think they were invented **before** the Victorian Era, **during** the Victorian Era or **after** the Victorian Era and then check your answers using the answer key or with your own research. When you discover the year each object was invented in, write it on the back for reference.



Label these pockets from left to right.

Before 1837

During
1837-1901

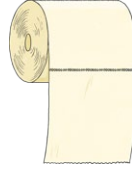
After 1901



Postbox



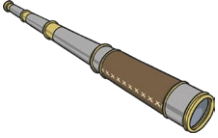
Toaster



Rolled Toilet Paper



The Postage Stamp



Telescope



Inflatable Rubber Tyre



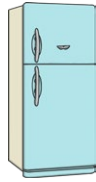
Electric Light Bulb



Stethoscope



Propeller



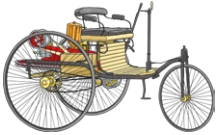
Refrigerator



Photographic Paper



Stephenson's 'Rocket'



Petrol Motor Car



Revolver



Tank



Telephone