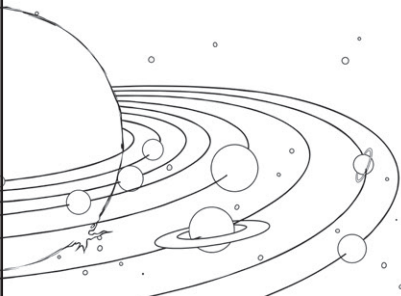
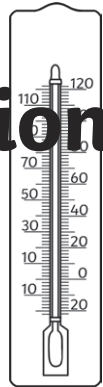


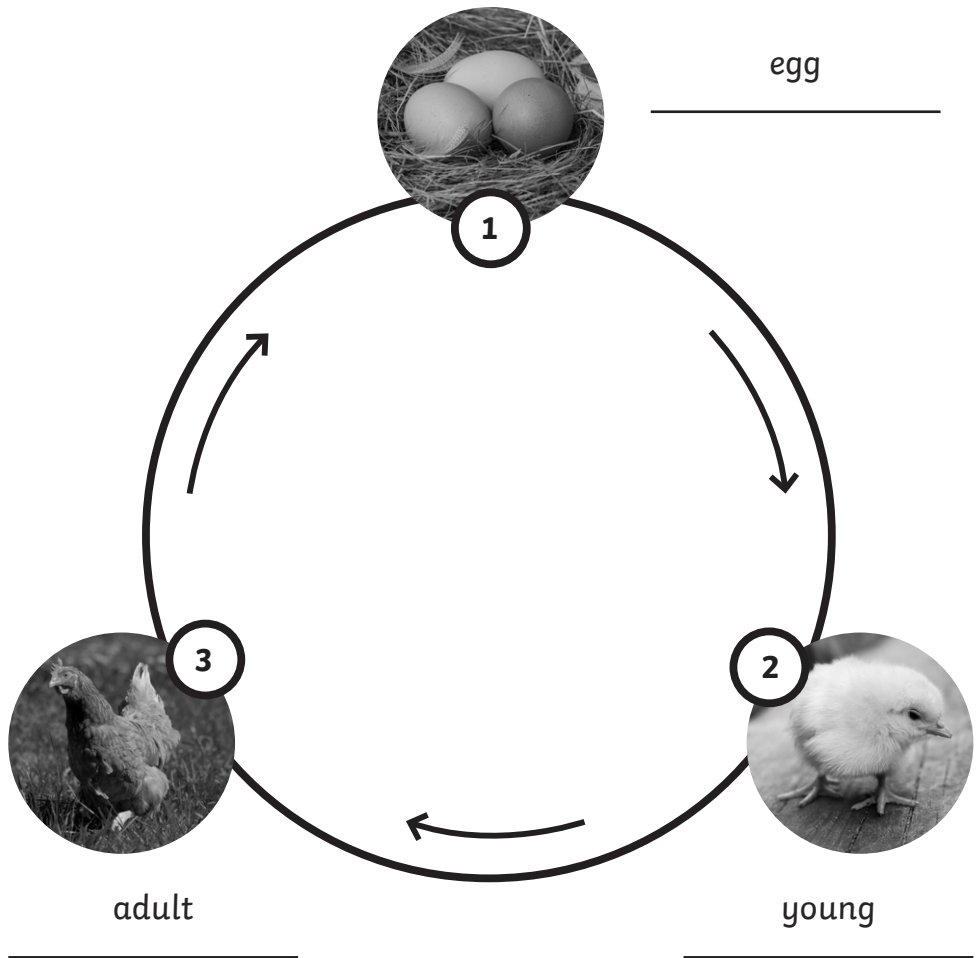
Year 5 Science Revision Booklet Answers



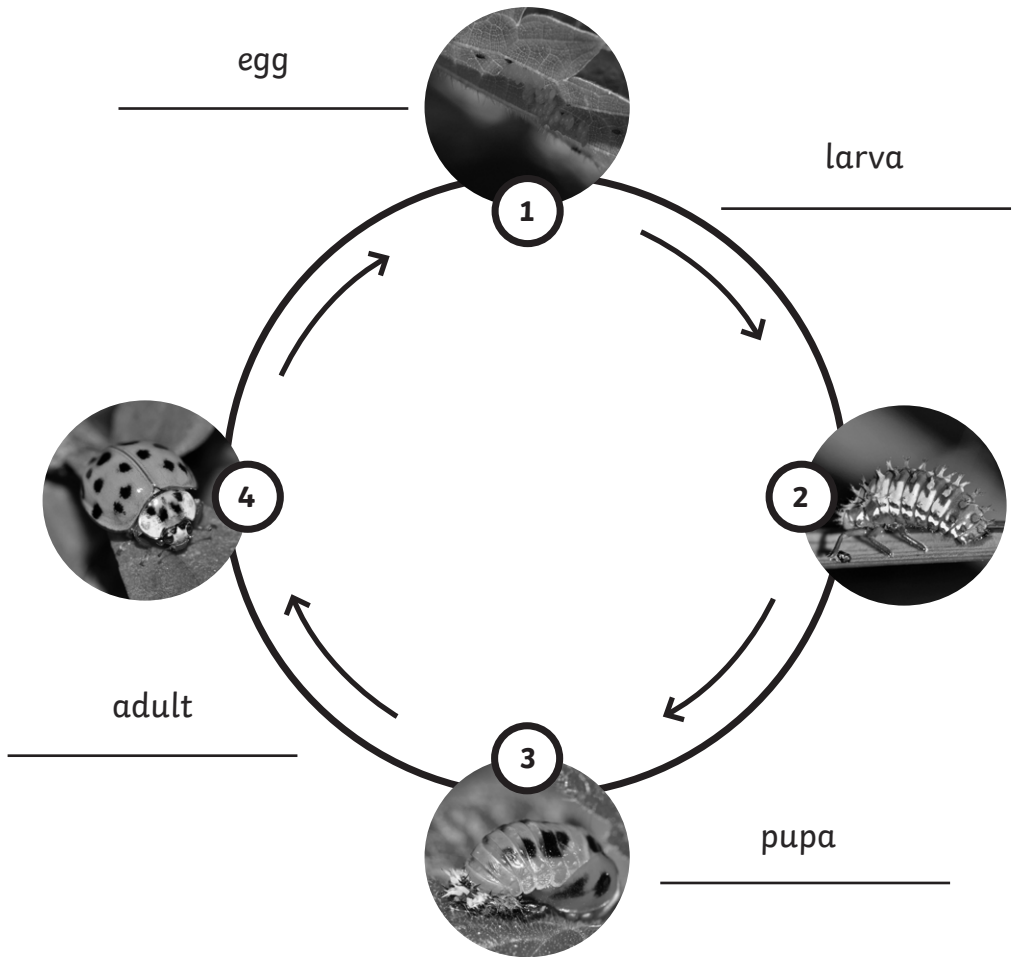
Living Things and Their Habitats

1. Label each stage of the following life cycles:

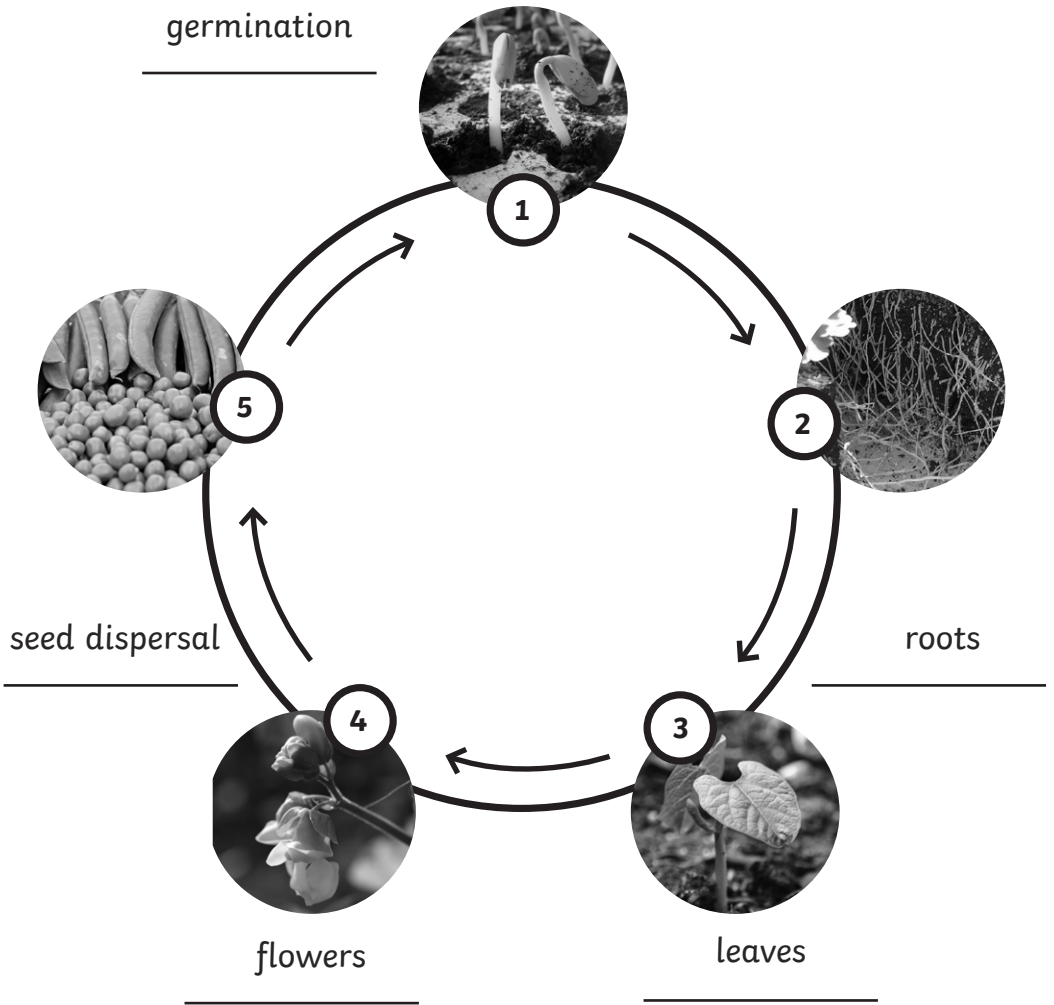
Life Cycle of a Bird:



Life Cycle of an Insect:



Life Cycle of a Flowering Plant:



2. Fill in the missing words using the word bank below:

Sexual reproduction is when the **male** and the **female** sex cells of two **different** parents are needed to make offspring. Some living things, such as **plants**, contain both the males and female sex cells. This is called **asexual** reproduction.

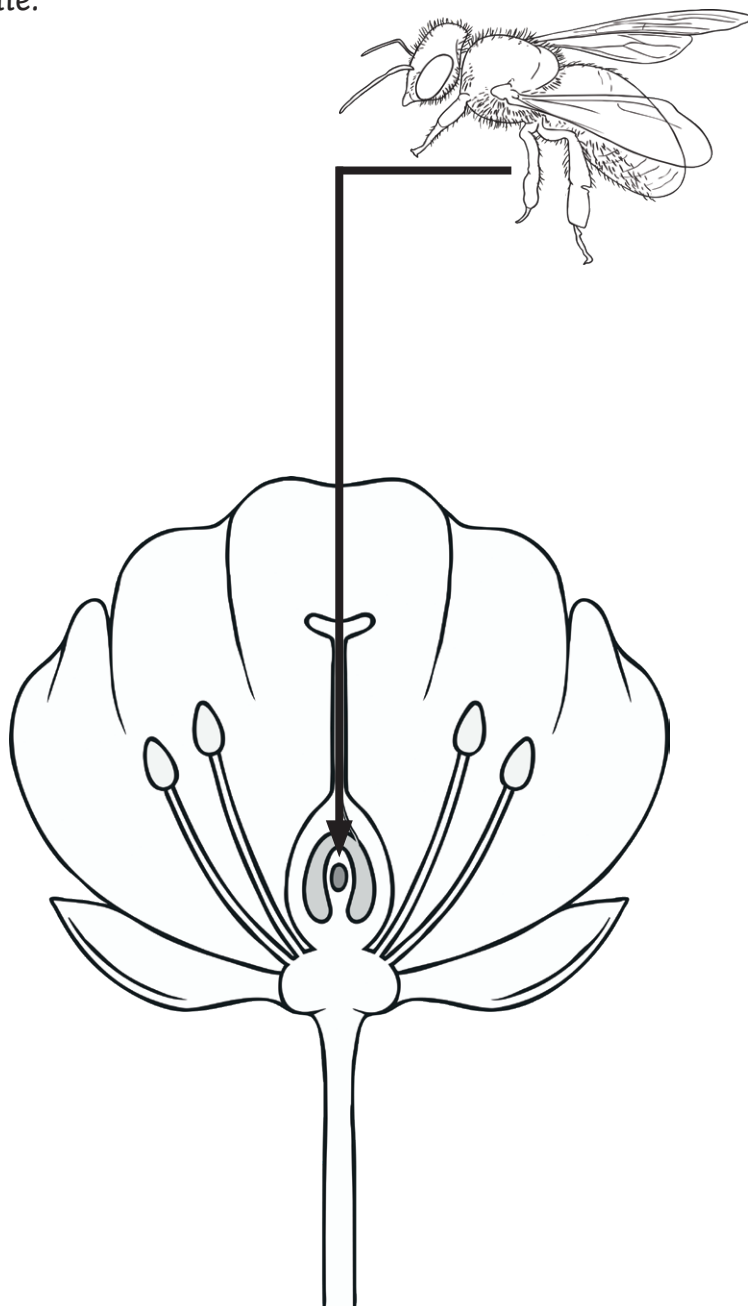
3. Write numbers to order the events as they happen when mammals reproduce:

2	The fertilised cell divides into different cells and will form a baby.
4	A baby is born.
3	The baby grows inside the female until the end of the gestation period.
1	The male sex cell, called the sperm, fertilises the female sex cell.

4. True or false?

Most plants cannot fertilise themselves.	True
The male sex cell in a plant is called the ovules.	False
The female sex cell in a plant is called pollen.	False
Pollen can travel from one plant to another via wind, insects or animals.	True

5. Draw arrows to show how the pollen from the bee travels to the ovule.



Forces

1. What force pulls objects toward the Earth?

Gravity

2. Who is this and how is he believed to have developed the theory of gravity?

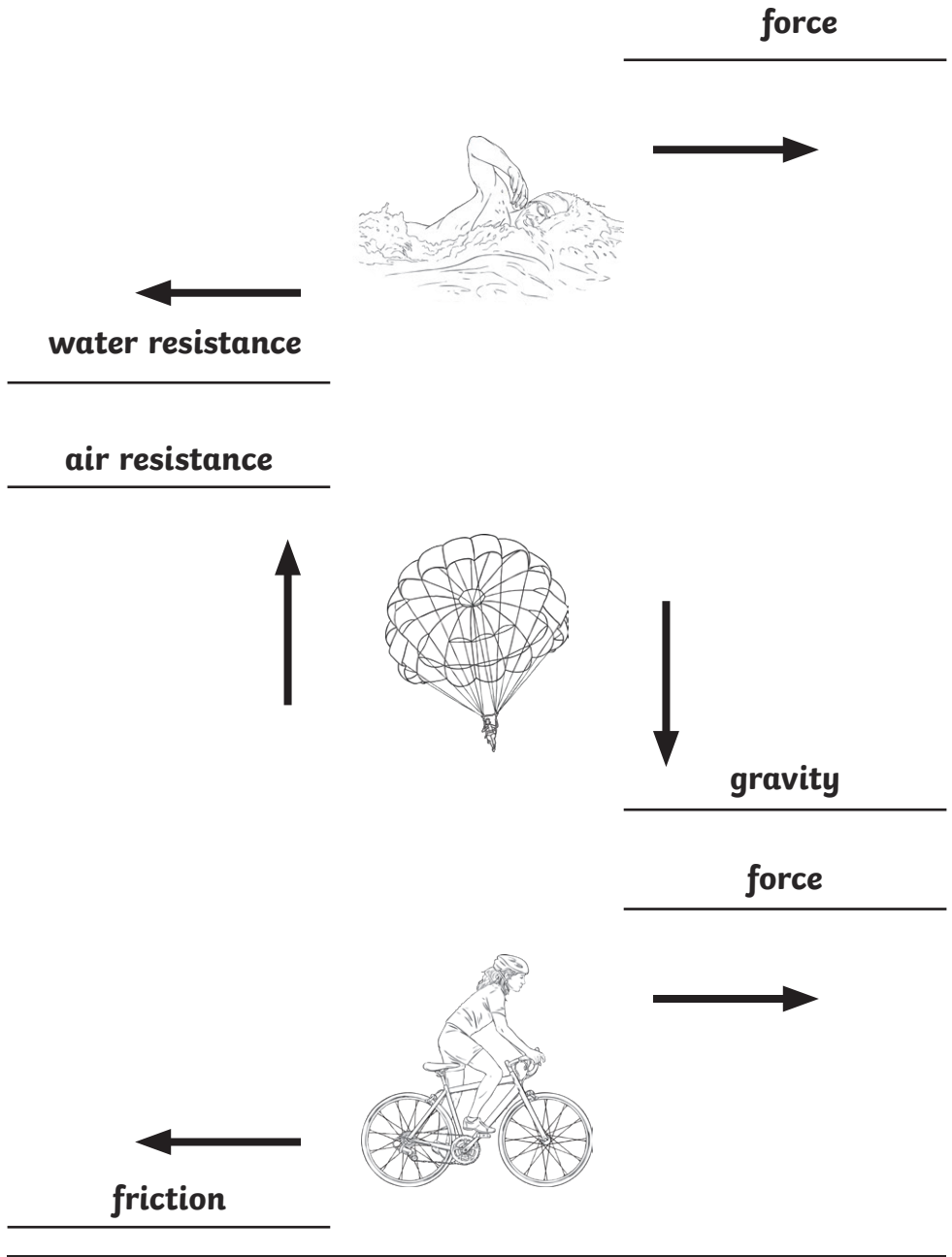


This is Isaac Newton. It is believed that he developed the theory of gravity when he saw an apple fall to the ground from an apple tree.

3. Fill in the missing words using the word bank below:

The Moon has a **smaller** mass than Earth so the **gravitational** pull on the Moon is smaller than it is on Earth. Jupiter has a **greater** mass than Earth so the gravitation pull on Jupiter is stronger than on **Earth**.

4. Label the diagrams to show how air resistance, water resistance and friction effect the movement of objects:



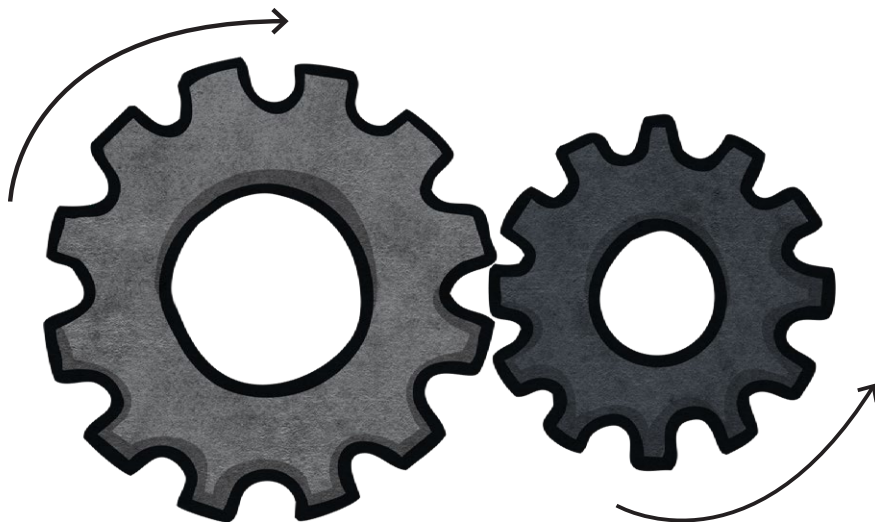
5. Think of an example of when an object has been streamlined to minimise the effects of air or water resistance.

Example answer: Racing cars are low down, close to the ground and have a pointed and curved shape so that it cuts through the air and does not create much air resistance.

6. Name a mechanism that can be used to make a small force lift a lighter load.

Accept pulleys or levers

7. Use arrows to show which direction the smaller cog will turn:



Animals, Including Humans

1. Label each stage of human development using the words from the word bank below:



infancy



childhood



adolescence



early adulthood



middle adulthood



late adulthood

2. Name **three** ways in which the human body changes during puberty.

Accept any three of the following:

- **grow taller**
- **grow hair under armpits**
- **grow hair on arms and legs**
- **grow pubic hair**
- **larynx (voice box grows)**
- **skin becomes oilier**

3. Describe **one** difference between the way in which girl's and boy's bodies change during puberty.

Accept one of the following:

- **girls grow breasts**
- **boys develop an Adam's apple**
- **boy's penis, scrotum and testes develop**
- **boys grown hair on chest**
- **boys grow facial hair**
- **girls start to menstruate**

4. How often does the female body menstruate?

Circle the correct answer.

once a week

once a year

once a month

everyday

Earth and Space

1. True or False?

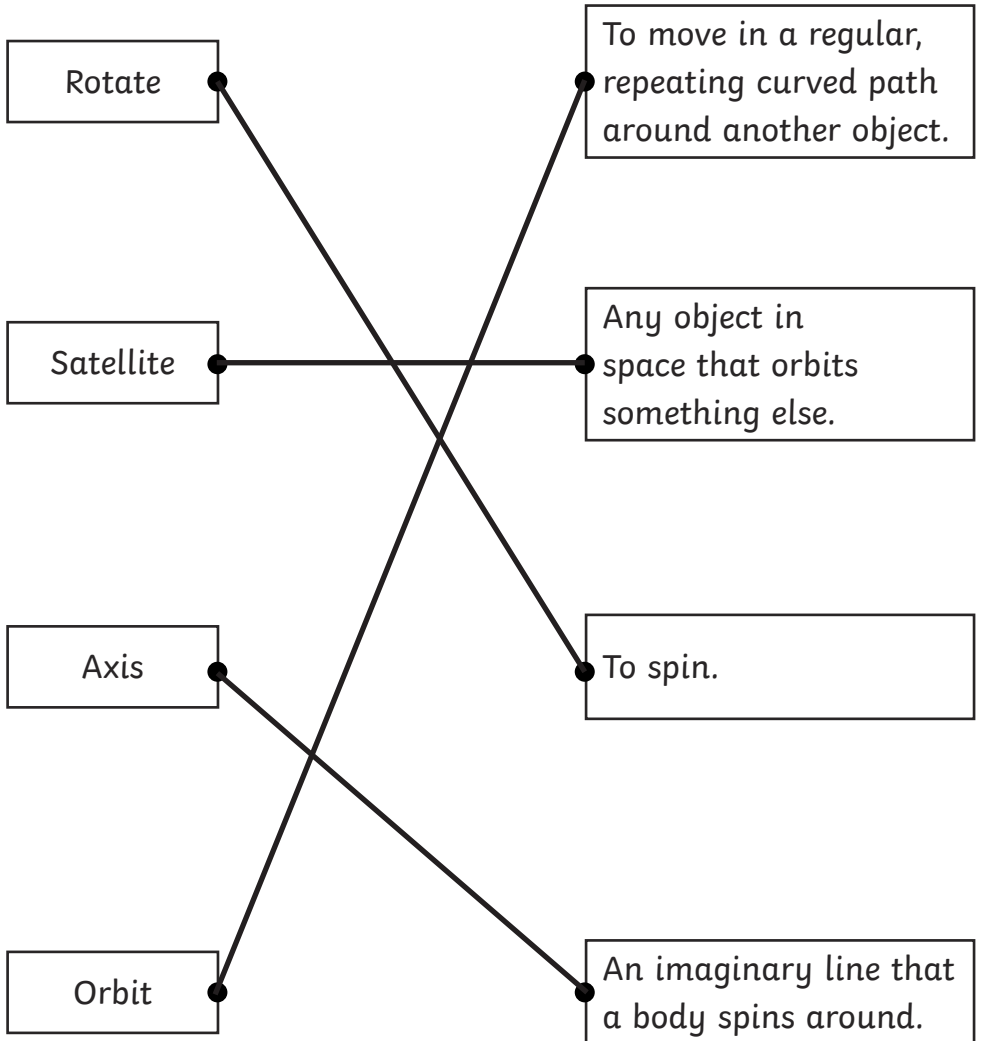
The Sun orbits the Earth.	False
The Moon is a satellite of Earth.	True
The Sun is a star.	True
The Moon changes shape at different times of each month.	False

2. For each false statement above, explain why it is wrong.

The Earth, and other planets, orbit around the Sun.

The Moon does not change shape. As the Moon rotates around Earth, the Sun lights up different parts and so it looks different at different times.

3. Draw lines to match each word with its definition:



Earth and Space

4. What shape are the Sun, Earth and Moon? Circle the correct answer.

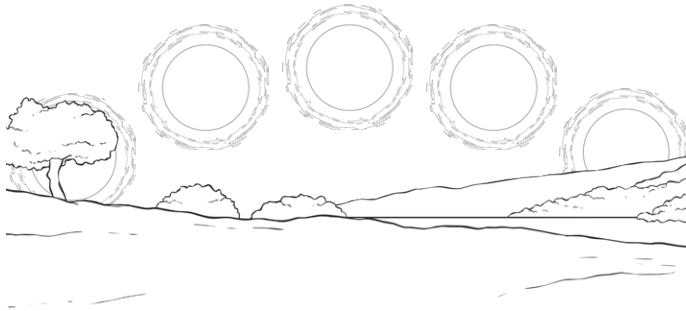
circular

oval

spherical

oblong

5. Explain how this image led to the geocentric model.



This picture shows how the Sun appears to move across the sky which is why people used to believe that the Sun orbited around the Earth. This is known as the geocentric model.

6. Fill in the missing words.

Earth rotates on its **axis**. It does a full rotation once in every **24** hours. At the same time, it is also orbiting around the **Sun**. It takes a little more than **365** days to orbit the Sun. **Daytime** occurs when the side of the Earth is facing **towards** the Sun. Night occurs when the side of the Earth is facing **away** from the Sun.

Properties and Changes of Materials

1. Name **two** everyday objects for each of the following properties:

Hard	Soluble	Transparent
Example answers: glass metal pipe	Example answers: sugar salt	Example answers: glass water
Electrical Conductor	Thermal Insulator	Magnetic
Example answers: copper wires water	Example answers: wool polystyrene	Example answers: paperclip scissors screws bolts

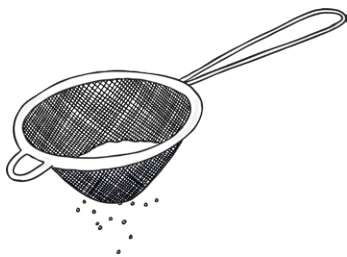
2. Fill in the missing words using the word bank below to help:

A **solution** is made when solid particles are mixed with liquid particles. Materials that will dissolve are known as **soluble**. Materials that won't dissolve are known as **insoluble**.

3. True or false?

Once a solid has been dissolved, it can never be reversed.	False
When an irreversible change occurs, a new material is made.	True
The smaller the particles, the quicker a solid will dissolve.	True
A soluble will dissolve faster in colder liquid.	False

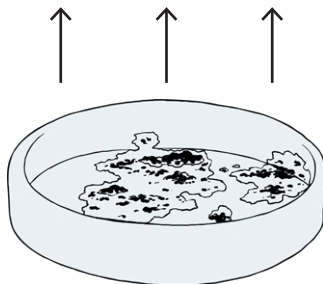
4. Label the diagrams below with the name of each process used to separate mixtures:



sieving



filtering



evaporation

5. Give two examples of everyday reversible changes.

Example answers:

melting chocolate

freezing water

boiling water

6. Give two examples of everyday irreversible changes.

Example answers:

burning wood

frying an egg

toasting bread

rusting metals

7. Explain why wooden spoons are used when cooking.

Example answer: Wooden spoons are used when cooking because wood is a thermal insulator. This means that the spoon will not heat up and become too hot to touch.

8. Explain why wires are covered in plastic.

Example answer: Wires are covered in plastic because plastic is an electrical insulator. This means that it will not let electricity travel through it and therefore stops you from getting an electric shock.